



2004 Annual Report Newsletter

Volume 10, No 1 Winter 2005

PO Box 883, Helena, Montana 59624 • 406-442-2218 • 800-823-2625 • fax 406-442-2346 • shares@montanashares • www.montanashares.org

Montana Shares 2004/2005 Campaign is reaching goal!

It's not too late to give—every gift makes a difference

This fall's charitable giving campaign season is being wrapped up with a big gold ribbon. Although some workplaces are not yet complete or reporting in, it looks like we'll reach, and possibly exceed, the goal set by our board of directors—this means \$240,000 is being pledged to the 40 member groups. This will break records again for Montana Shares!

To those of you who have already given or made your pledge—**THANK YOU** from all of us involved with Montana Shares.

If you've not yet made a pledge—**IT IS NOT TOO LATE—EVERY GIFT** makes a difference and every dollar is put to work entirely here in Montana. You'll find in this issue a brochure, pledge form and return envelope. Please use it if you have not yet made a pledge, or pass it along to a friend, colleague or family member that have not have seen these materials at work or home. Note: secure online giving is available at www.montanashares.org

We want to highlight some outstanding workplace campaigns that have come in so far. At the top of the list are a number of campaigns with significant increases in their giving totals over the previous campaign: Benefis Healthcare (405% increase), MEA-MFT (227%), CFC of Missoula and Ravalli Counties (156%), DA Davidson-Bozeman (137%), UM-Montana Tech (127%), Bozeman Deaconess Hospital (125%), Northrop Grumman-Helena (112%), Community Food Co-op-Bozeman (82%), Northwestern Energy-Butte (78%), Missoula County (60%), Lewis & Clark Library (53%), City of Bozeman (44%), City of Billings (41%), 4C's-Butte (35%), Butte Silver Bow (31%), Alternatives, Inc-Billings (25%), City of Helena (25%), Billings School District (22%) and Butte Schools (22%).

Others showing increases in the campaigns reported so far are: Davidson Companies-Great Falls, Great Falls Schools, Cascade County, DA Davidson-Helena, Galusha Higgins & Galusha-Helena, Q Communications, Reynolds Motl Sherwood Law firm, Rocky Mountain Development Council, Shodair Hospital, University of Montana-Missoula, DEAP-Miles City and Sears statewide campaigns.

In the 2004/2005 campaign, the most significant workplace donations in terms of total dollars raised: State Employees Charitable Giving Campaign (SECGC) (approximately \$48,000 reported so far), University of Montana-Missoula (\$16,000 raised this year), MSU-Bozeman (about \$15,000), Combined Federal Campaign (CFC) of Missoula and Ravalli Counties (nearly \$12,000), St Peter's Hospital & SPH Healthcare \$11,000), Benefis Healthcare (\$8,600), Northrop Grumman (\$7,550), Great Falls Schools, (\$6,300) and the Helena Schools \$5,800). Although not yet reporting final numbers, historically the Big Sky CFC, CFC for the Greater Helena Area, the CFC for Great Falls Area and the CFC for Southwest Montana have pledged in the past a combined \$30,000 for Montana Shares members.

The most generous average gifts per capita were given by employees at Northrop Grumman in Helena at \$260 each, which includes a special matching contribution to several first-time donors' gifts.

The campaign at Benefis Healthcare in Great Falls was especially good news because this was the first year in five years that Montana Shares was welcomed into the formal

(continued on page 3)

New Groups Increase Your Choices & Diversity to Montana Shares

There are always a few changes for a variety of reasons to the list of nonprofits participating in Montana Shares each campaign cycle. Most years at least a few groups leave Shares; most often this is due to changes in their organization, their board, staff or the services they provide. All members must demonstrate a high level of accountability and go through an annual review and application process in order to remain on the list; Shares members also commit to partnering with the other member groups to help with the statewide promotion of the collaboration and the projects of the members.

New groups are added by March each year if they meet the standards and qualify to join Shares in campaigns across the state. (See page 5 or contact Shares for more details)

This past year we welcomed 7 new groups in to Shares broadening the choices and diversity of our network of nonprofits. A brief description about the work of each gives our supporters an indication of some of the work they are doing in our communities and the impact they have on the lives of Montan-

(continued on page 3)

INSIDE

- President's Message
- Board & Staff
- Accountability
- About Montana Shares
- New Members' application deadline 2/15
- How did the gifts stack up
- Thanks to sponsors and supporters in 2004
- Raffle Results

Montana Shares

BOARD OF DIRECTORS

OFFICERS (2004/2005)

Stacey Anderson, Helena, At-Large: President
Sherrie Downing, Helena, At Large: Vice President
Susan Miles, Helena, At Large: Secretary
Dick Paulsen, Helena, American Lung Association of No Rockies: Treasurer
Ellen King-Rodgers, Bozeman, Heart of the Valley Humane Society, Past President

Montana Shares Member Organizations (2004/2005) Full Members (Representative to Shares Board of Directors and Alternates)

AIDS Network of Southern Montana: Holly Floyd, Jessica Byerly
Alternative Energy Resources Organization: Jonda Crosby, Kelly Rusoff
American Civil Liberties Union of Montana Foundation: Scott Crichton, Lois Fitzpatrick
American Lung Association of the Northern Rockies: Dick Paulsen, Debbie Goodyear
American Wildlands: Faye Kommers, Rob Ament
Arthritis Foundation, Montana Branch: Toni Little; Jim Goddard
Befrienders: Karen Larsen, Dave Shepard
Big Brothers Big Sisters of Montana: Donna DeRosier, Annette Leland
Butte AIDS Support Services: Rick Holman, Gary Stallings
Heart of the Valley Humane Society (formerly Humane Society of Gallatin Valley):
Ellen King-Rodgers, Jane Lerner
Jeannette Rankin Peace Center: Carol Bellin, Janet Finn
Komen Montana/Race for the Cure: (MT Affiliate, Susan G Komen Breast Cancer Foundation);
Bobbie Pomroy, Ann Lawson
Last Chance Community Pow Wow: Linda Priest, Cary Youpee
Lewis & Clark Humane Society: Robyn McNellis, Kevin St John
Life's End Institute: Missoula Demonstration Project: Susan Hancock
Mai Wah Society: Deb Bishop, Dori Skrukru
Montana Artists Refuge: India Supera, Claudia Montagne
Montana Association for the Blind: Myrle Tompkins, Gail Brockbank
Montana Child Care Resource & Referral Network: Ann Tribby, Jeff Jensen
Montana Food Bank Network: Kate Bradford, Susan Gecho Gobbs
Montana Human Rights Network: Alison James, Christine Kaufmann
Montana Mental Health Association: Deb Matteucci, Molly Prothero
Montana Natural History Center: Brad Robinson, Betsy Maier
Montana Outdoor Science School: Cassie Carter, Brenda Karp, Deb Davidson
Montana Preservation Alliance: Chere Jjusto, Ellen Crain, Dori Skrukru
Montana Wilderness Association: Judy Kilmer, Tim Baker
NARAL Pro Choice Montana Foundation (formerly Montanans for Choice): Jessica Rhoades,
Darlene Bos
Vigilante Theatre Company: Dominique Blokker, Cathy Kohler

ASSOCIATE MEMBER GROUPS (2004/2005)

Contacts listed, not represented on Shares Board

Art Center Education Society (ACES): Chelsea Smith, Laurel Campbell
Indian Law Resource Center: Brooke Swaney, Marilyn Richardson
Montana Large Animal Sanctuary & Rescue: Susan Rawlings
Montana Raptor Conservation Center: Deb Luttmann
Montana Spay Neuter Task Force: Ellen King-Rodgers, Jean Atthrowe
Montana Wildlife Federation: Stan Frasier, Jan Dee Cronin
PRIDE: Jan Donaldson, Diana Longdon
Rocky Mountain Hemophilia & Bleeding Disorders Association: Jessica Amende, Kelli Anderson
The Trust for Public Land-Northern Rockies Field office: Teddi Everett, Robert Rasmussen
Wildlands CPR: Tom Petersen
WEEL (Working for Equality & Economic Liberation): Naomi Kimbell, Jodi Medlar
Yaak Valley Forest Council: Robyn King

*Associate members receive designated contributions only and are not voting members of the board of directors.

AT LARGE DIRECTORS on the Montana Shares Board

Stacey Anderson, Helena (term ends 3/2006)
Beki Brandborg, Helena (5/2005)
Sherrie Downing, Helena (9/2005)
C Mark Fowler, Helena (2/2005)
Brett King, Helena (9/2006)
Susan Miles, Helena (9/2006)
Kristine Olsen, Billings (9/2005)
Paul Tuss, Havre (5/2005)
Mary Wright, Helena (2/2005)

STAFF

Joy McGrath, Executive Director
Judy Hester, Accounts Manager
Kristi Paulson, Office Assistant
Tawna Parisot, Member Services Coordinator
Montana Shares Graphics: Marla Goodman, Bozeman
Typesetting/Layout: DD Dowden, Helena
Printing: Allegra Print & Imaging, Helena

Member of Community Shares-USA – www.communitysharesusa.org
and National Alliance for Choice in Giving – www.choiceingiving.org

The board of directors meets in May and September, with a planning retreat in February every year. The executive committee meets frequently between board meetings.

President's Message

Happy New Year from the Board of Montana Shares. Last year was a wonderful year with the addition of new groups, new volunteers and the continued generosity of Montana communities. It is with commitment to our shared vision for a vibrant and healthy Montana that we move forward into 2005, with its promise of both opportunities and challenges.

As always, we wish to thank everyone for their support of Montana Shares and its diverse member groups. It truly is a pleasure to work for so many outstanding nonprofit organizations that seek to make our lives better through their work on issues concerning women, families and seniors, health and hunger, the environment, arts and culture, domestic and wild animals, social justice and human rights.

As you reflect on your personal goals and aspirations for 2005, the Board of Montana Shares would encourage you to find your passion and make a difference. Whether you love animals, Montana's wild places, the theatre, or protecting our freedoms—your help and support will be greatly appreciated by the nonprofit of your choice. A sense of community is critical to our well-being and Montana Shares in an integral part in making us all feel connected.

Stacey Anderson
Board President

About Montana Shares

Montana Shares is a partnership of Montana-based nonprofit groups devoted to improving the quality of life in communities throughout the state. Our members promote and protect our state's human, animal cultural and natural resources; they work on issues concerning women, families and seniors, health and hunger, the environment, arts and culture, domestic and wild animals, social justice and human rights.

The purpose of Montana Shares is to work with and on behalf of our members to promote and support their programs, provide training, technical assistance, consultation and financial support on a year-round basis and, thereby, to help them expand and diversify their programs that serve Montanans. Contributions received at Montana Shares further serve to accomplish these purposes.

ACCOUNTABILITY

Montana Shares is audited annually and meets the national standards for federations set by the National Alliance for Choice in Giving and Community Shares-USA (*see their websites for details*). We hold our members to strict accountability standards as well.

You, the donor, can be confident that your contributions are supporting the causes you want and being well managed. For more information on Montana Shares or our member groups, please contact us.

10th Annual Montana Shares Raffle

Thanks to everyone who participated in and supported Montana Shares by your donations during the summer and early fall. This year's raffle was the biggest ever with 46 fabulous prizes donated by individuals and businesses through our member groups. All winners of prizes were all notified by mail, have been posted on our website and are listed with the generous donors of the prizes.

Montana Shares 2004 Raffle Results

Grand Prize Description	Winner	Donors
#1 Two tickets to the Butte's Mother Lode Theatre Series for 2004-2005 Season	Dominique Blokker, Manhattan	Mother Lode Theatre, Butte
#2 Enjoy dinner out before settling into western comfort and hospitality in a classic bungalow on the fabled Rocky Mountain Front at the Viewforth Bed & Breakfast, Fairfield, MT	Betty Jo Powell, Missoula	MWF & Viewforth Bed & Breakfast, Fairfield
#3 Your Own Private Boat Tour and Guided Hike to Grinnell Lake for up to 49 people at Many Glacier in Glacier Park provided by the owners of Glacier Park Boat Company	Joe Olheiser, Helena	Art & Susie Burch, Kalispell
#4 Colorful serving tray of fused glass handmade by Richard Parrish of Fusiostudio, Bozeman.	Ken & Stephanie Wallace, Helena	Richard Parrish, Bozeman
#5 "Garden Sunflower," framed photo by St Ignatius, artist Louise Lamontagne	Anne Gentry, Big Fork	Louise Lamontagne, St. Ignatius
#6 Experience Downtown Helena with a stay at The Great Northern Hotel, coffee at Firetower Coffee House, Lunch at the Windbag Saloon, and dinner at Benny's Bistro plus treats from Park Avenue Bakery and a book from Globe Pequot Press	Don Bleak, Havre	Great Northern Hotel, Benny's Bistro, Firetower Coffee House, Windbag Saloon, Park Ave Bakery, Globe Pequot Press, Helena
Prize Description	Winner	Donors
#1 Robert F Morgan signed/numbered print "Home is Where the Heart is," \$50 gift certificate for framing at Bears Den in Helena, dinner for 2 at Three Forks's Sacajawea Inn	Ralph Stone, Missoula	Sacajawea Inn Three Forks & Bears Den, Helena
#2 Abundance of Montana Basket of Montana-made products	Sarah Howe-Cobb, Augusta	Various AERO members
#3 Two nights lodging in the Huntley Lodge and one round of golf at Big Sky Resort.	Eileen Carney, Libby	Big Sky Resort
#4 "Westslope Cutthroat Trout—Our Native Fish in Peril" Limited-edition watercolor signed print, mounted and shrinkwrapped, by Michael Simon of Livingston.	Bob Liston, Missoula	American Wildlands, Bozeman
#5 Travel gear from Patagonia in Dillon	Mary Ann Mackay, Billings	Patagonia, Dillon
#6 \$100 gift certificate for the Billings Rimrock Mall	Teresa Geremia-Chart, Helena	Arthritis Foundation, Montana Branch, Billings
#7 Overnight at Bozeman's Microtel Inn & Suites plus dinner at Ferraro's Fine Italian Restaurant	Chris Imhoff, Helena	Microtel Inn & Suites & Befrienders, Bozeman
#8 Original ceramic piece by Josh DeWeese, Resident Director, Archie Bray, Helena	RMHBDA, Bozeman	Josh DeWeese, Archie Bray Foundation, Helena
#9 "Fetchin," a bronze sculpture by Dick Idol of Big Sky from the Montana Gift Corral	Sharon Sullivan, Butte	Montana Gift Corral, Bozeman
#10 Peruvian Chulucanas Pottery lamp crafted by Peruvian potters; Fair Trade Certified	Whitney Robinson, MD, Billings	Jeannette Rankin Peace Center, Missoula
#11 Birch bark basket with moose leather and a stone/bone-bead bracelet by Julie Malloway	Anonymous, Bozeman	Indian Law Resource Center, Helena
#12 Beaded bola tie by a native of the Tonawanda/Seneca Nation and suncatcher by a Utah native	Harriett Meloy, Helena	Indian Law Resource Center, Helena
#13 An overnight stay at the historic Grand Union Hotel, Fort Benton, MT	Jane Morell-Hart, Helena	Komen Montana, Helena
#14 Ranger buckle, tip and keeper handcrafted by Native American silversmith Dave Jersey, Toston	Adam Switalski, Missoula	Dave Jersey, Toston
#15 \$100 gift certificate for a family portrait at and donated by Newton Photography of Helena	Peter Merrill, Bozeman,	Sandy Newton, Helena
#16 \$100 gift certificate toward a raft trip by Lewis & Clark Trail Adventures, Missoula	Harvey J Hackman, Polson	Lewis & Clark Trail Adventures, Missoula
#17 Bounty of Butte Basket: tour of Chinatown, dine at Gamer's Cafe, Park Street Pasties, plus more!	Mary Cannon, Missoula	Gamers, Park Street Pasties, Mai Wah, Butte
#18 Traditional Tibetan Hand knotted 6'x 3' Carpet	Jim Olson, Hamilton	India Supera, Tibetan Children's Foundation
#19 Award winning, framed drawing by Eloy Guevara, Big Timber	Leigh Ann Leary, Boulder	Myrle Tompkins and Montana artist
#20 A pair of whimsical, hand quilted moose wall hanging by Ann Tribby of Miles City.	Gary Gurtler, Deer Lodge	Ann Tribby, Miles City
#21 Basketful of unique gifts representing the diversity of Montana	Mike Scott, West Yellowstone	12 R&R agencies
#22 A dozen gourmet cookies a month for a full year from Missoula's DoubleTree Hotel	Steve McArthur, Missoula	DoubleTree Edgewater, Missoula
#23 12-piece T-FAL Perfection Cookware set from Montana ACE Hardware, Missoula.	Bill Lombardi, Helena	Montana ACE Hardware, Missoula
#24 Hand-cut sterling silver pendant with a Yogo Sapphire by Brian Warrington of Hot Springs	Anonymous, Bozeman	Brian Warrington, Hot Springs
#25 Specialty birdfeeder with bird seed and \$50 gift certificate from Birds & Beasleys in Helena.	Vonnie Bolton, Butte	Birds & Beasleys, Helena
#26 Two rounds of golf at the Old Works Golf Course and stay overnight at the Lodge at Sky Haven	Ann Lawson, Whitefish	The Lodge at Sky Haven/Old Works Golf Course
#27 "Six Magpies" a framed, signed, limited-edition print watercolor by local artist Kehdahl Jan Jubb	Mary Jo Bremner, Browning	Montana Natural History Center, Missoula
#28 Half day guided raft trip with Montana Whitewater on the Gallatin or Yellowstone Rivers	Curt Klotz, Helena	Montana Whitewater, Bozeman
#29 Elevators at Acme, MT, archivally printed, matted, framed b/w photograph by Bruce Selyem	Mary Ternes, Helena	Bruce Selyem, Bozeman
#30 \$100 gift certificate for gallery or framing at Framework Designs, Bozeman.	Linda Bailey & David Bixby, Missoula	Framework Designs, Bozeman
#31 Handmade "lampworked" multi-colored floral glass bead pendant by Bonnie Goodman	Rick Holman, Butte	Bonnie Goodman, Bozeman
#32 Overnight at The Sanders - Helena's Bed & Breakfast, plus dinner at the Windbag Saloon & Grill	Courtney Powell, Missoula	The Sanders & The Windbag, Helena
#33 Functional porcelain serving platter & mug by Helena artist Sarah Jaeger	Dave Holand, Bozeman	Sarah Jaeger, Helena
#34 Hand-crafted lap quilt by Sweenycrick Stitches in Helena	American Lung Assn/Helena	Jan Donaldson, Helena
#35 "Tie Flume" a framed print by Sheridan, WY artist Ellen Sparks	Barbara Spring, Missoula	Ellen Sparks, Wyoming
#36 Four tickets to any Vigilante Theatre Company dinner theatre show in Bozeman or on the road	Last Chance Community Pow Wow	Vigilante Theatre Company, Bozeman
#37 Patagonia jacket for man or woman	Diana Talcott, Great Falls	Patagonia, Dillon
#38 Patagonia jacket for man or woman	Anita Varone, Helena	Patagonia, Dillon
#39 Hand-crafted, lightweight birch yoga blocks and a 52-piece set of hand-crafted maple children's blocks by Yaak toymakers Basic Blocks in Troy, MT	Gloyd Simmons, Butte	Basic Blocks, Troy
#40 Three hours neuromuscular massage therapy, Clarks Fork Fitness & Training Center, Bridger	Anonymous, Glasgow	Kathy Watson, Bridger

Watch for information and tickets for the next raffle from May through the drawing on September 10, 2005.

(2004/2005 CAMPAIGN, continued from page 1)

campaign. Thanks to CEO John Goodnow, the Benefis administration and the Benefis Foundation staff for recognizing that employees like choices in their charitable giving. Special thanks to the many employees that not only support Montana Shares but also those that support the local United Way programs and the Benefis Foundation, as well as the new cancer facility, through the Benefis Charitable Giving Campaign!

We also launched campaigns for the first time in these workplaces: AWARE-Inc, Alternative Youth Adventures, Big Sky Brewing, Boyle Deveny & Meyers, Mountain West Bank, Great

Falls Clinic, Helena Physicians Clinic, MSU-Great Falls College of Technology, and Unipro Systems. Thanks to these employers for inviting Montana Shares into your workplaces. Also thanks to the City of Great Falls and the City of Helena for including an information/pledge card in your utility bills.

There are so many very supportive and very generous folks in Montana—and we appreciate every one of you. We know how precious your time and money are—and all the groups and individuals involved with Montana Shares appreciate everything you do to help us improve the quality of life in communities throughout Montana.

(NEW GROUPS, continued from page 1)

ans. Although we provide their websites, links are available to their sites from our website: www.montanashares.org



Big Brothers Big Sisters (BBBS) of Montana, headquartered in Helena, supports the nine BBBS agencies throughout Montana to cost-effectively help at-risk youth avoid drug/alcohol abuse, violence, pregnancy, dropout and suicide. Child delinquents are 2-3 times more likely to become serious, violent, and chronic offenders than adolescents whose delinquent behavior begins in their teens.† BBBS matches and supports one-to-one relationships between caring adult volunteers and at-risk youth to help kids avoid delinquent behavior and succeed. Learn more: 406-442-1982, www.bbbsmontana.org

Life's End Institute

Missoula Demonstration Project

Life's End Institute (LEI), works to improve the quality of life for dying Montanans and their families through research, education, and outreach at their headquarters in Missoula. More than 90% of us place a high value on physical comfort and freedom from pain. Pain scales, a proven way to better assess pain, were developed by the LEI and are used by both Missoula hospitals and other health care providers around the state and the country. Learn more: 406-728-1613, www.lifes-end.org



Montana Human Rights Network (MHRN), organizes communities to confront hate groups and other extremists using violence and intimidation as political change tools. They promote democratic values while challenging bigotry and intolerance. Hate groups can thrive in communities where bigotry goes unchallenged.† The MHRN works to educate a constituency to speak up for human rights across Montana. Learn more by contacting them at their Helena headquarters, 406-442-5506, www.mhrn.org

Montana Association for the Blind (MAB), also headquartered in Helena with chapters and services statewide, promotes social and economic self-sufficiency of visually impaired Montanans by providing quality education and training and cultivating a positive understanding of blindness. There are more than 4,000 Montanans who are legally blind and an additional 17,000 plus who are visually impaired. The MAB provides programs that teach and develop skills which allow the visually impaired to live independently, be self-sufficient and give volunteer time to community organizations. Learn more by calling their office: 406-442-9411.

ARTS CENTERED EDUCATION SOCIETY (A.C.E.S.)

Art Centered Education Society (ACES) works to enhance art education by contracting with qualified artists and art educators to provide artistically educational experiences to students in schools and Bozeman-area arts organizations. While funding for the arts continues to be cut, support for the arts is needed even more. ACES works to enrich the overall quality and impact of education by bringing the arts into more people's lives more often. Learn more: 406-587-3029, www.ArtsCenteredEducationSociety.org



Montana Spay/Neuter Task Force (MSNTF) teaches respect for life.† Its mission is to reverse universal acceptance of killing as a solution to pet overpopulation, using education, low-cost spay and neuter and community

involvement. They help create pet care events with free demonstration spay/neuter clinics. The community discovers how to solve and owns the solution to pet overpopulation. Learn more: 406-777-2644, www.montanaspayneutertaskforce.org

Montana Natural History Center (MNHC), rejoining Montana Shares after re-organizing internally, is headquartered in Missoula and fosters understanding, appreciation and conservation of natural systems in Montana through natural history education. The MNHC focuses on a proactive response through effective education that awakens an appreciation of the natural world by strengthening one's understanding of it. Learn more: 406-327-0421, www.TheNatureCenter.org



How did the gifts stack up last year?

The donors drive Montana Shares distributions policies. We emphasize donor choice and honor your choices. Designated gifts are directed to the groups or causes as the donor asks. Undesignated gifts are shared equally among the full members.

This is how the giving was distributed by issue categories last year—in the 2003/2004 campaign. (*doesn't equal 100% due to rounding*):

- 22% – Protecting domestic and wild animals (3 members)
- 18% – Working for a just, humane society (6 members)
- 13% – Supporting quality health care (6 members)
- 12% – Protecting and providing for children and families (5 members)
- 12% – Conserving Montana's wildlife, wild places and natural heritage (6 groups)
- 9% – Promoting community arts and culture (6 members)
- 9% – Protecting and providing for the needs of women (2 members)
- 4% – Building sustainable homes, communities and land (2 members)



LEFT TO RIGHT MONTANA SHARES STAFF: *Kristi Paulsen, Office Assistant; Tawna Parisot, Member Services Coordinator; Judy Hester, Accounts Manager and Joy McGrath, Executive Director*

New Members' Application Deadline

Montana Shares is accepting applications for new associate member groups. Applications are due February 15th. For more information or to receive a complete application packet, please contact the Shares office.

THANKS TO THESE SPONSORS AND SUPPORTERS IN 2004!

Many thanks to the following for their support of our events in 2004, for helping in our campaigns or with materials and promotion and training of our members. Be sure to thank them for supporting Montana Shares when you next visit their business.

BlueCross BlueShield of Montana
BigSkyWeb.com & George Parisot
Lombardi Strategic Communications
Galusha, Higgins & Galusha, Helena
St. John's Lutheran Church, Helena

On Broadway
Bert & Ernie's Dining Saloon & Grill
Windbag Saloon & Grill
Green Iguana Juice & Joe
Brewhouse Pub & Grille
Overland Express Restaurant
Stonehouse Restaurant
Tommy's City Hall Cafe
Benny's Bistro
Green Meadow Country Club
Montana Club
Butte's Broadway Cafe

Jenny Martin
Bozeman Shares Sweet Pea helpers
Van's County Market, Bozeman
Borders Books, Music and CafÉ, Bozeman
Mericos Foundation
Wilbur Rehmann Jazz Quartet
The Jazz special guests
Capital High Jazz Combo
Myrna Loy Center
Birds & Beasleys
Montana Book Company
Park Avenue Bakery
Sweet Flours Bakery
Blackfoot River Brewing
Allegra Print and Imaging, Helena
Benny's Bistro
Bullock Law Firm
Ross Cannon, Attorney at Law

Lucy Dayton & Mark O'Keefe
Harlen, Chronister, Parish & Larson Law Firm
Hunt Law Firm
Meloy Triewiler Law Firm
Naturopathic Acupuncture Clinic
Rick Pyfer, Attorney at Law
The Mitchell Group
Valley Bank of Helena
Bagel Company
Downtown Helena, Inc.
Farcountry Press
Firetower Coffee House
Great Divide
Montana Logging & Ballet Company
Starbucks Coffee, Helena
And ...
All our MT Shares board of directors
Our Members and their staff and boards

Thanks for supporting the training needs of our members:

Lombardi

strategic communications

500 North Benton
Helena, MT 59601

Email: bill@billlombardi.com

GALUSHA HIGGINS & GALUSHA

P.O. Box 1699
Helena, MT 59624
406.442.4420
www.ghg-cpa.com

Friday, February 4th
Myrna Loy Center
7:30 p.m.

Special performance by the
Capital High Jazz Combo

7th Annual JAZZ and Just Desserts

A Benefit for Montana Shares

Complimentary reception at intermission featuring
incredible gourmet desserts and beverages.

Myrna Loy Center
and Montana Shares Presents

*The Wilbur Rehmman
Jazz Quartet*

Tickets Available at:

- Myrna Loy • Montana Shares
- Montana Book Co • Birds & Beasleys

Credit cards also accepted on-line at:

www.montanashares.org
www.myrnaloycenter.com
442-2218

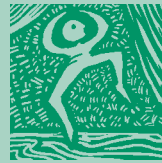
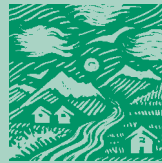
Tickets:

- \$ 6 Student
- \$12 Senior
- \$15 Adult



4th Annual Eat Your Fair Share ... Statewide

Watch for restaurants partici-
pating in your community in
our spring fundraiser. If you
own/manage an eating estab-
lishment and want to partici-
pate, contact Montana Shares.



PO Box 883
Helena, MT 59624

THANKYOU for supporting
Montana Shares and our 40 members



Nonprofit Org.
US Postage
PAID
Permit No. 10
Helena, MT

RETURN SERVICE REQUESTED

It is not too late to give—every gift makes a difference!